

MIYAZAWA  
*M*

奏

*M*

*Head-Joints*



# MX

## Prologue

- MX-1 and MX-2 - with these 2 new headjoints, Miyazawa finally goes on to a completely new stage of sound creation.

These models with an amazingly innovative and distinctive sounds are Miyazawa's very best monumental works of head-joints made of all Miyazawa's know-how and wisdom compiled during 46 years of its history.

In other words, it took 46 years to reach these products, with patient efforts of reviewing and re-arranging the basic elements such as characteristics of materials, momentum of weight and design balance among parts.

It must be true that it is endless to pursue the best combinations of all the elements above, from among the vast possibilities in the ever-lasting flow of progress in flute-making technology, but these 2 models are what Miyazawa can recommend you with strong confidence, as one of the highest peaks in headjoint developments among the long history of Miyazawa.

These 2 headjoints were developed on the completely different sound concept that Miyazawa ever had, and we wish if these new sounds will provide current lovers of Miyazawa flutes with a new potential of expressions, and at the same time, will provide other flute players with a good threshold to start using Miyazawa flutes. We hope that our passion will sound in your heart every time when you play with them.

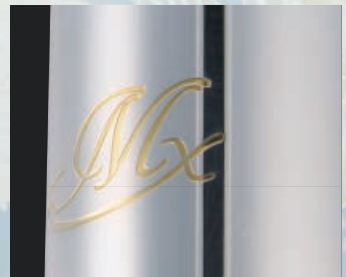


*MX-1*



The crown also has a elegant and gorgeous special ornamentation. Please enjoy this brilliant shines like diamond with dodeca-hedron cuttings.

*MX-2*



Miyazawa has named these headjoints "MX" to distinguish them as completely different from the current model name of "MZ." These headjoints feature a specially designed golden etched "MX" logo used exclusively for these models.

# MX-1



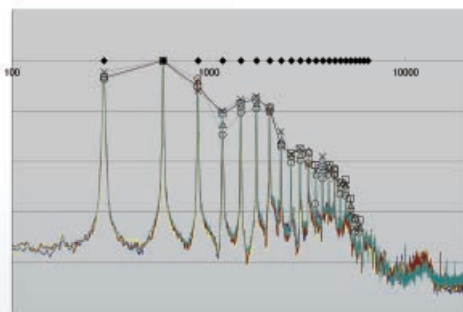
“We want to craft the tools for a sound that no one has yet experienced.”  
– This passion of Miyazawa drives the development of these new headjoints, going back to the origin of flute making through the technology of today. MX-1, with its pure and warm tone has a dense, penetrating sound that is consistent throughout all registers.

# MX-2



The MX-2 has a free and comfortable feeling with immense tonal color variety. We invite you to enjoy these completely new sounds from Miyazawa.





Through collaborations with professional players and an external sound laboratory, Miyazawa has thoroughly verified the sound, sonority, playability and tonal colors, comparing our current models and also with the models of other brands. The quick response and clean articulation are appreciated by professional players and are also proven by scientific data.



How can we produce a deep and dark sound that is different from the Miyazawa sound that has been described as brilliant and colorful? This theme has been our consistent goal through extensive research and development. We have reached new heights with this new balance of tubing, lip plate and riser as well as the form of the embouchure design.

	Crown	Tubing	Lip Plate	Riser
MX-1	Ag925	Ag958	Ag925/14K	Ag990/14K
MX-2	Ag925	Ag958	Ag925/14K	Ag990/14K

*Mx*

*Iijima Factory*



*M*  
MIYAZAWA<sup>®</sup>

**Miyazawa Flutes MFG Co., Ltd.**

758, Iijima, Iijima-machi Kamiina-gun, Nagano, 399-3702, Japan

MIYAZAWA  
*M*<sup>®</sup>

